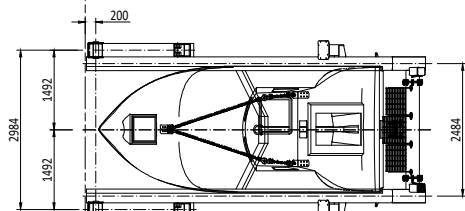
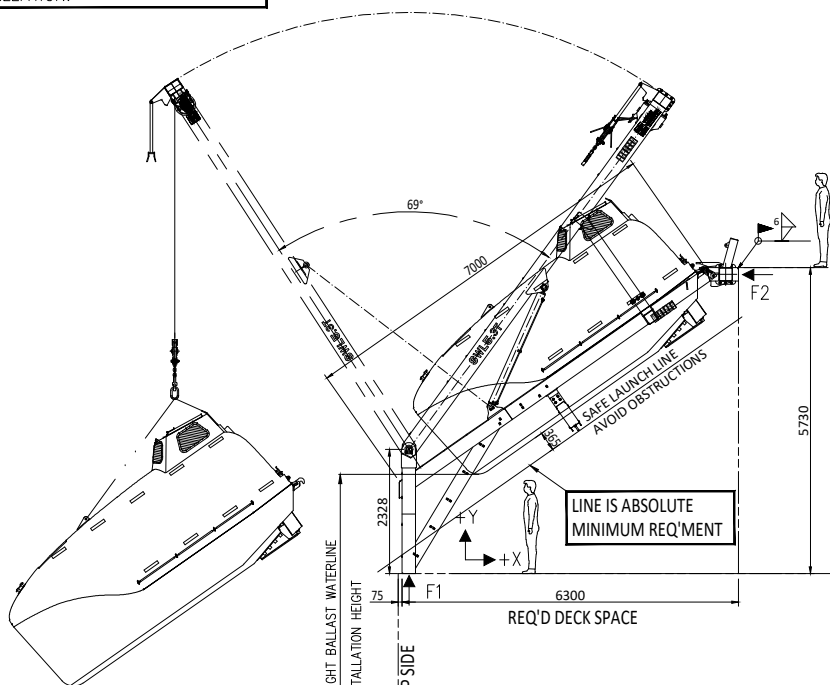
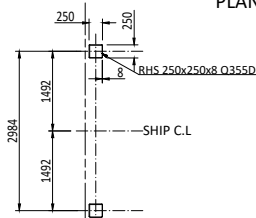


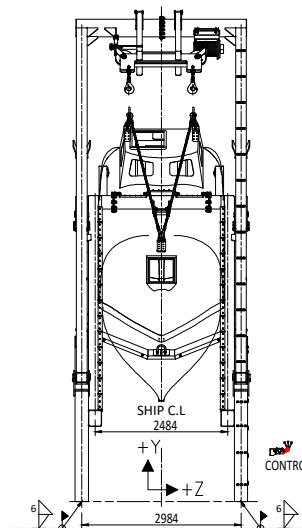
THIS DWG. IS FOR GENERAL
INFO. ONLY.
PLEASE SEE THE CORRESPONDING
G.A. DWG MADE TO SUIT YOUR
INSTALLATION.



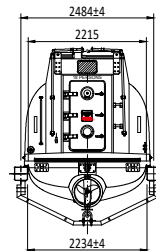
PLAN VIEW



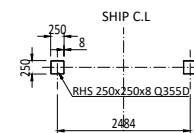
FOOTPRINTS IN DECK



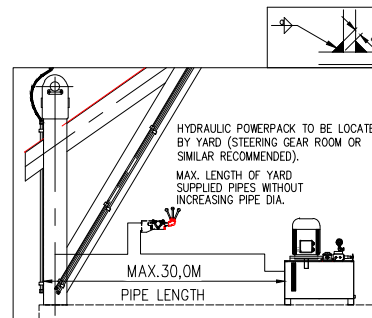
FRONT VIEW



SECTION THROUGH SKIDWAY



SUPPORT PRINTS IN BULKHEAD



HD-18 Davit for GES-18 Free Fall Lifeboat:

SWL Lowering	5300 kg
Hoisting speed	5m/min
Lowering speed	5m/min
Total davit weight	4900kg
Design specification	20° list / 10° trim
Primary means of launching	Free fall 20° list, 10° trim simultaneously
Secondary launching	Lowering by winch (5° list / 2° trim) EL. Power must be available
Max. inst. height	15 m

NOTES:

1. Access platforms, handrails, doubler plates etc. :Yard supply.
2. Location of hydraulic power unit to be decided by yard. (Under-deck installation IP55).
3. Hydraulic piping between hydraulic power unit, davit and control valve to be yard supply.
4. All electric wiring by yard.
5. All field welds to be performed acc. to approved WPS. (Yard responsible)
All field welding is subject to class approval prior to start welding.
6. All field welds shown to be welded by yard during installation.

FORCES IN DECK (POINT LOAD EACH SIDE):

	Horizontal FORCE X kN	Vertical FORCE Y kN	Horizontal FORCE Z kN	Moment MOM X kNm	Moment MOM Y kNm	Moment MOM Z kNm
F1	±51	63	±19	±22	±8	±5
F2	±51	33	±14	±3	±6	-15

Reaction forces:

Reaction forces as joint loads side, marked with nodes on deck interface.

For orientation of forces see legend with marked XYZ vectors. All forces are point loads, nominal forces without any factors.

REV	DESCRIPTION	BY	CHECK	APPRO	DATE
3	Added details for footprint	CEZH	JUCH	WAGU	20.04.2021
2	Reissued for approval	CEZH	JUCH	WAGU	25.06.2019
1	Updated the template	CEZH	JETA	WAGU	11.11.2015

REVISION HISTORY



**VIKING
NORSAFE**

VIKING Norsafe Life-Saving Equipment Norway AS
P.O. Box 115 Tel: +47 37 05 85 00
4852 Færvik Fax: +47 37 05 85 01
NORWAY 24/7 Service: +47 37 05 63 33
Email: Viking-Norsafe@viking-life.com

Drawn by JETA Check by TEYU Appr. by WAGU Initial release date 17.02.2014

Project number	Project name	Client number
Title HD-18 DAVIT FOR GES-18 (INI WINCH/NFFH-50)		
Drawing type GA	Tolerances ISO 2768-mK, ISO 13920-BF	Scale 1:100
Drawing Number G-500337	Revision 3	Sheet Size A3
Material Number		Sheet No. 1/1
Weight		Projection method