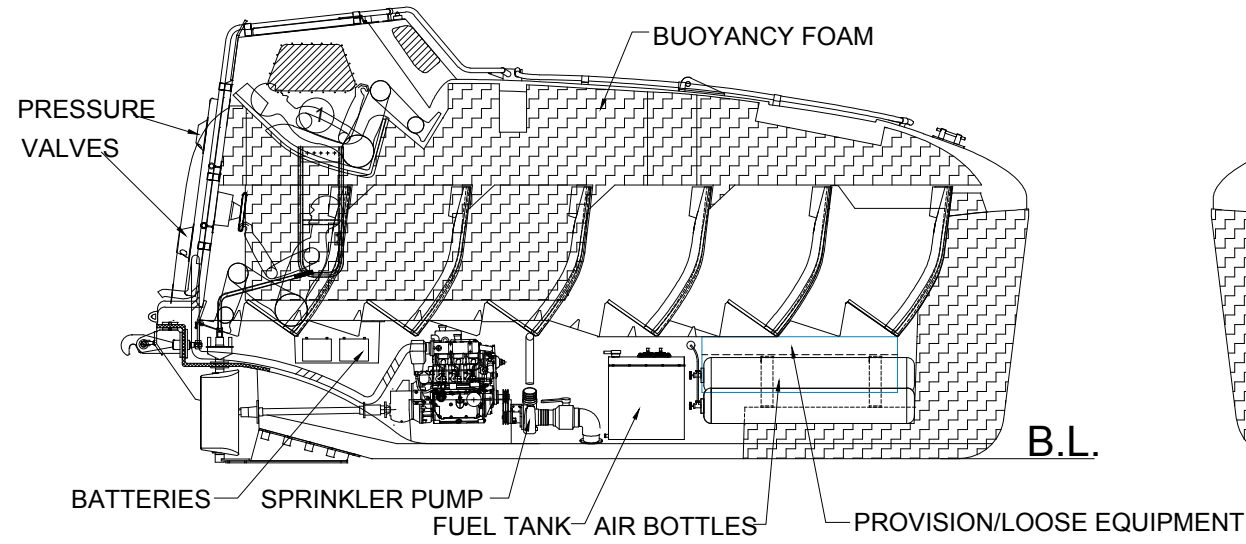
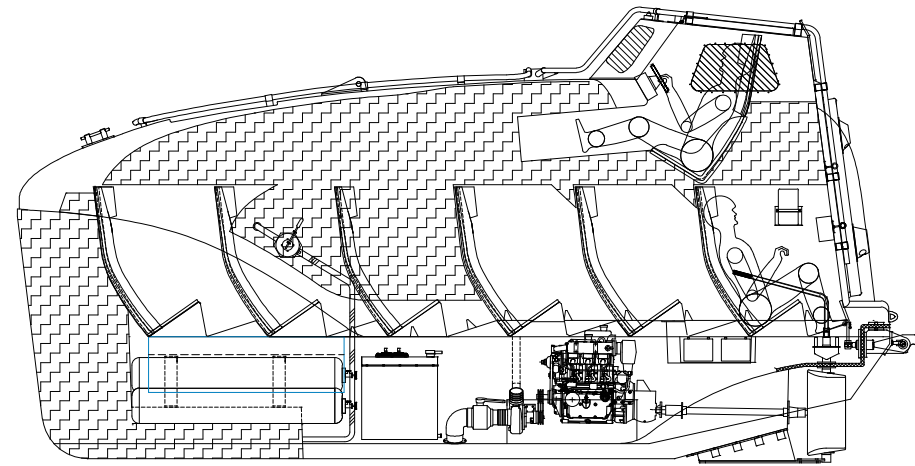


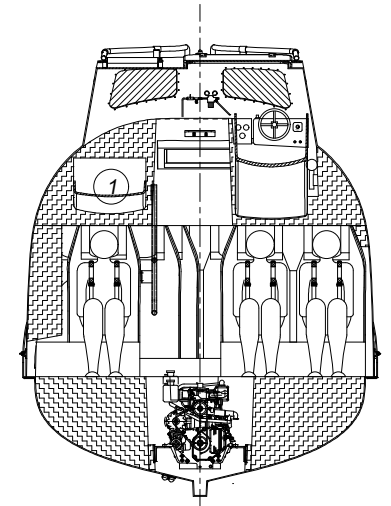
IMPORTANT
 SEAT 1 DURING FREE FALL, ONLY THIS SEAT SHOULD BE USED.
 AFTER FREE FALL, THEN MOVE TO OPPOSITE SIDE FOR DRIVING.



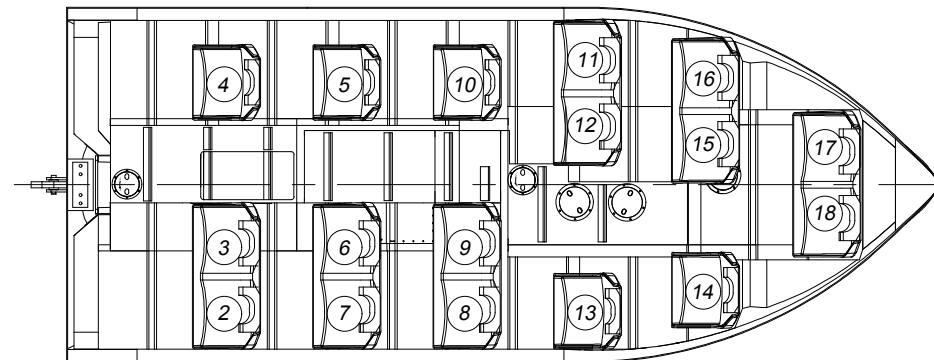
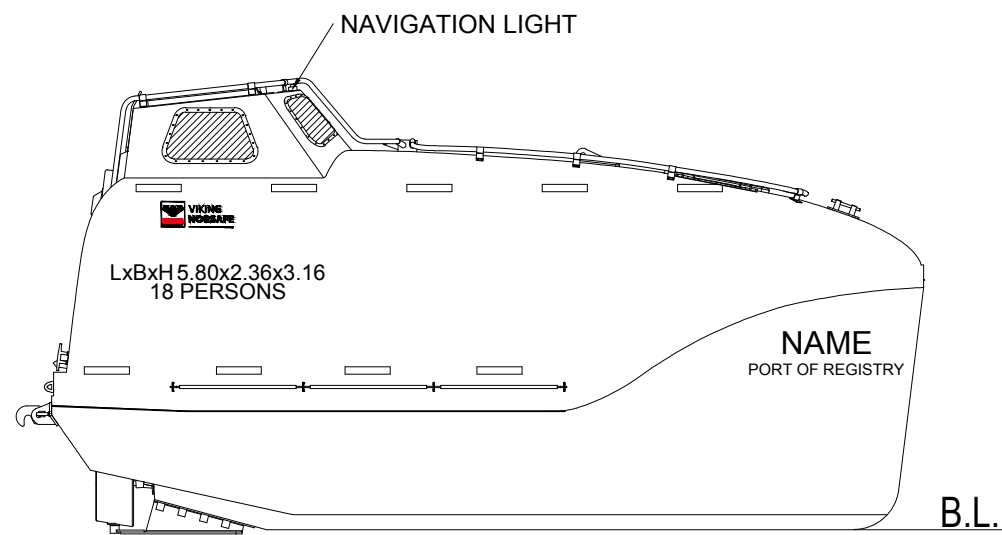
PORT INTERNAL VIEW



STB INTERNAL VIEW



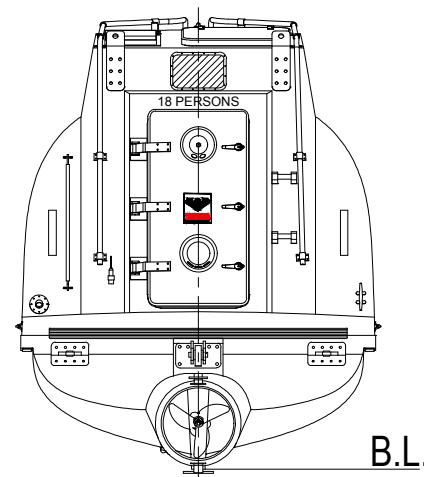
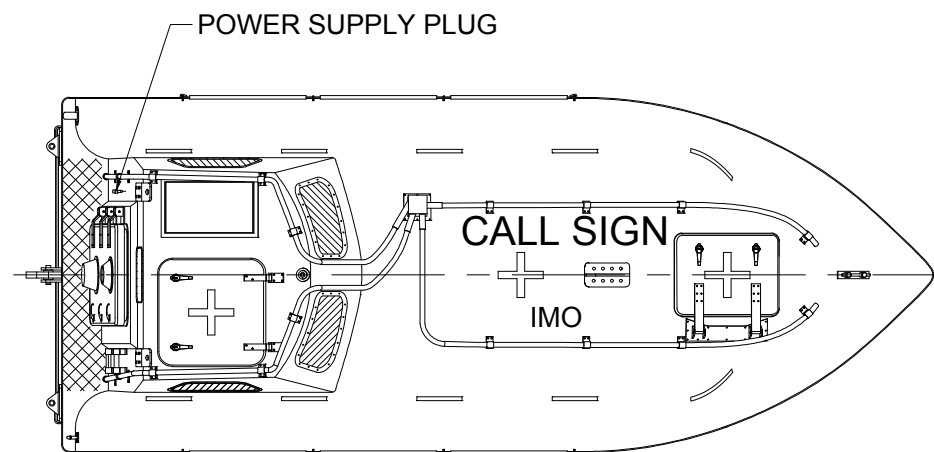
INTERNAL VIEW



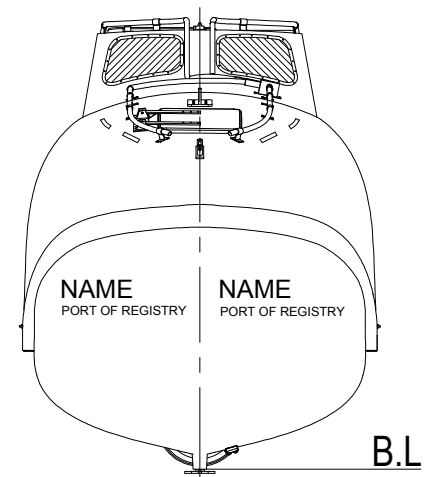
PRINCIPAL DIMENSIONS:

CAPACITY	18 persons
LENGTH OVERALL	5.800 m
WIDTH OVERALL	2.360 m
HEIGHT OVERALL	3.100 m
WEIGHT OF BOAT WITH EQUIPMENT	3265 kg
WEIGHT OF BOAT WITH PERSONS	4750 kg
SPEED	6 knots

Note:
 1. Due to manufacturing reasons, dimensions may vary up to 50mm.



AFT VIEW



FORWARD VIEW

REV	DESCRIPTION	BY	CHECK	APPRO	DATE
1	Update logo	STHU	KARL	THWA	12.06.2019
0	Issued for construction	RZH	JKJI	THWA	30.09.2016

NORSAFE REVISION HISTORY

VIKING NORSAFE	VIKING Norsafe Life-Saving Equipment Norway AS P.O Box 115 4852 Færvik NORWAY	Tel: +47 37 05 85 00 Fax: +47 37 05 85 01 24/7 Service: +47 37 05 63 33 Email: viking@viking-life.com
-----------------------	--	--

This drawing is the sole property of VIKING Norsafe Life-Saving Equipment Norway AS. It must not be submitted to other parties nor used in any manner detrimental to our interests. It shall not be copied, reproduced, used for manufacturing or sale without the written consent of VIKING Norsafe Life-Saving Equipment Norway AS. All rights are reserved.

DWG SIZE: A3	SCALE: 1:40	COPY OF:	PART NO.:	WEIGHT: N/A	SHEET: 1/1
CLIENT NO.:	PROJECTION METHOD:	REVISION: 1	GA WITH NFFH50 TANK VERSION		
TOLERANCES: ISO 2768-mk, ISO 13920-BF	PROJECT:	GES-18 MKII ASSEMBLY			
DWG No: G-501677					