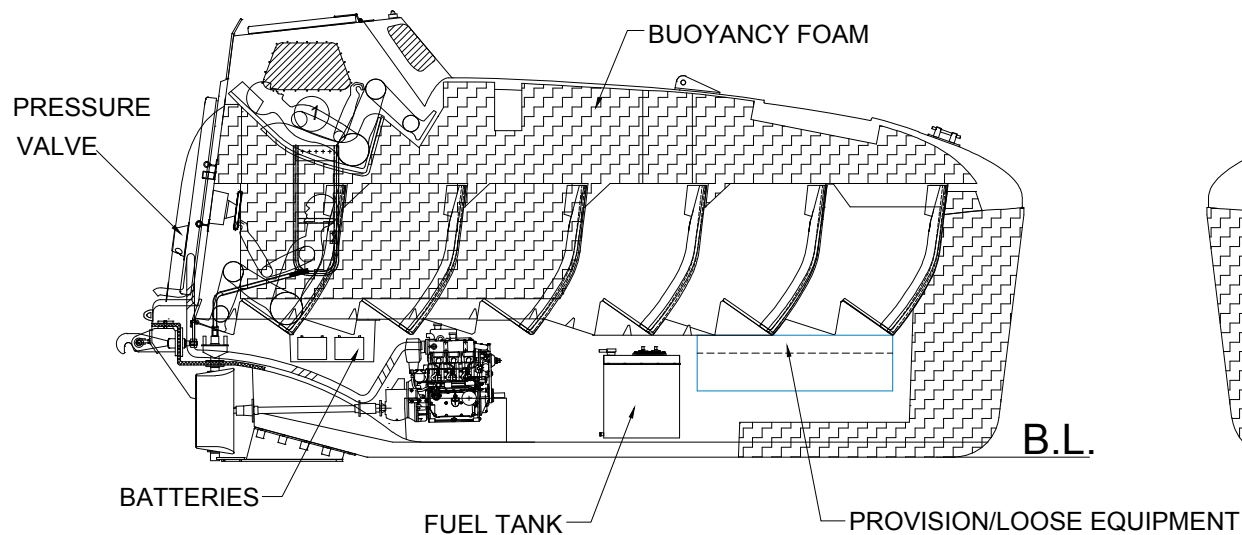
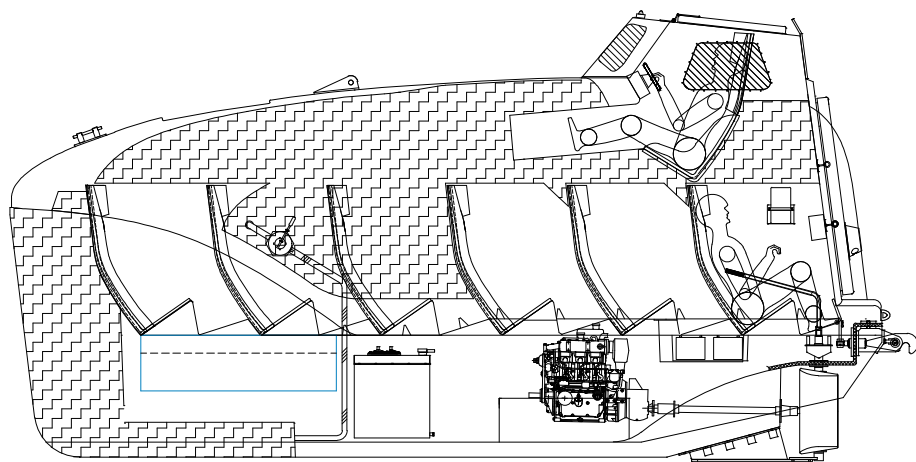


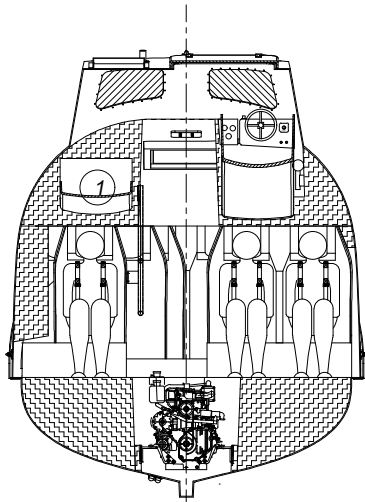
IMPORTANT
SEAT 1 DURING FREE FALL, ONLY THIS SEAT SHOULD BE USED.
AFTER FREE FALL, THEN MOVE TO OPPOSITE SIDE FOR DRIVING.



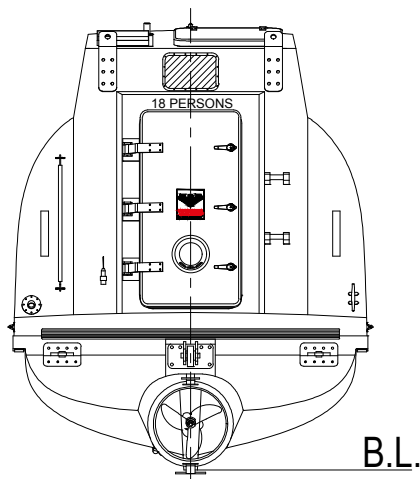
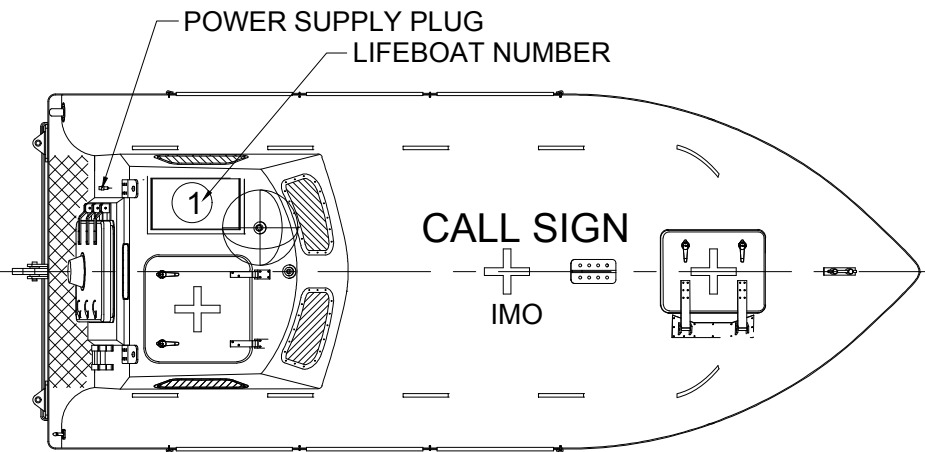
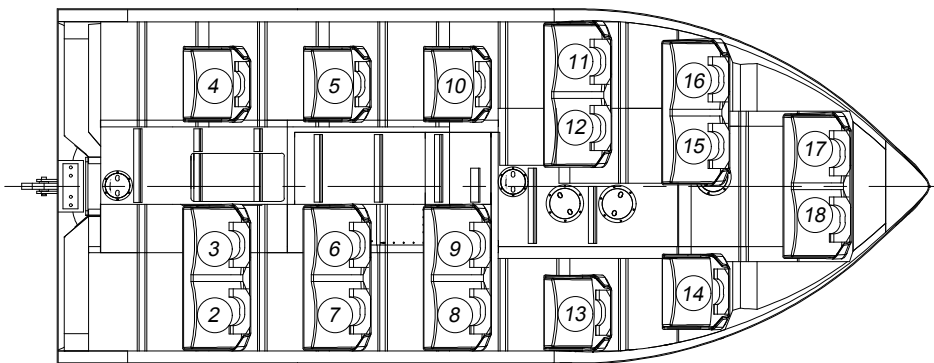
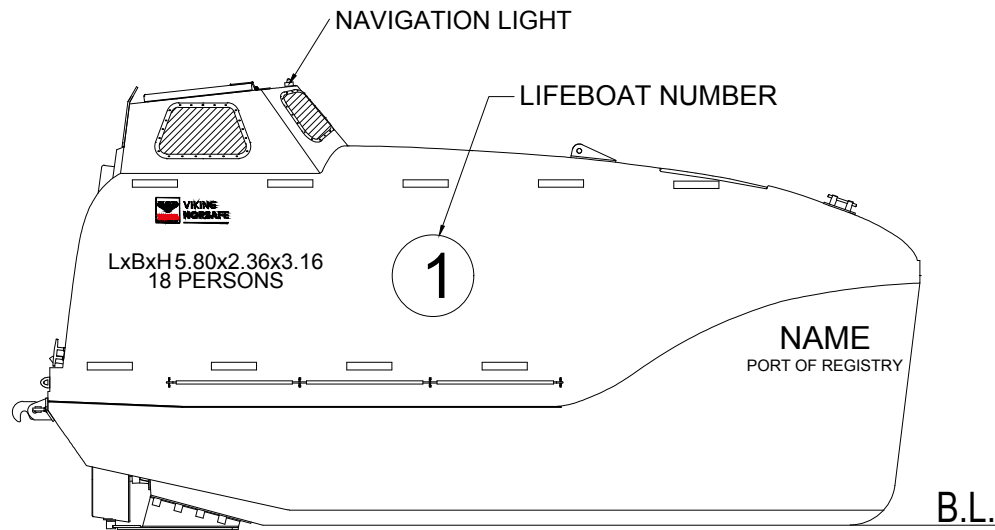
PORT INTERNAL VIEW



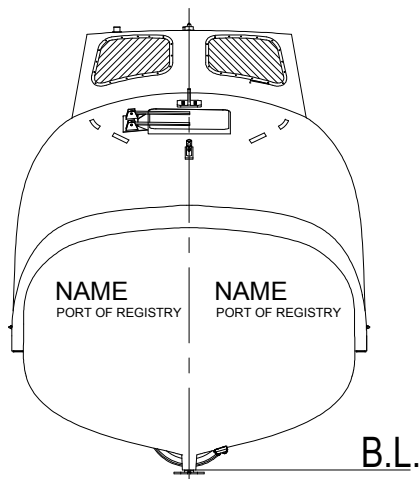
STB INTERNAL VIEW



INTERNAL VIEW



AFT VIEW




FORWARD VIEW

PRINCIPAL DIMENSIONS:

CAPACITY	18 persons
LENGTH OVERALL	5.800 m
WIDTH OVERALL	2.360 m
HEIGHT OVERALL	3.100 m
WEIGHT OF BOAT WITH EQUIPMENT	3265 kg
WEIGHT OF BOAT WITH PERSONS	4750 kg
SPEED	6 knots

Note:
1. Due to manufacturing reasons, dimensions may vary up to 50mm.

1	Update logo	STHU	KARL	THWA	12.06.2019
0	Issued for construction	RZH	JKJI	THWA	11.11.2016
REV	DESCRIPTION	BY	CHECK	APPRO	DATE
NORSAFE REVISION HISTORY					
 VIKING NORSAFE					
VIKING Norsafe Life-Saving Equipment Norway AS P.O. Box 115 Tel: +47 37 05 85 00 4852 Færvik Fax: +47 37 05 85 01 NORWAY 24/7 Service: +47 37 05 63 33 Email: viking@viking-life.com					
This drawing is the sole property of VIKING Norsafe Life-Saving Equipment Norway AS. It must not be submitted to other parties nor used in any manner detrimental to our interests. It shall not be copied, reproduced, used for manufacturing or sale without the written consent of VIKING Norsafe Life-Saving Equipment Norway AS. All rights are reserved.					
DWG SIZE: A3	SCALE: 1:40	COPY OF:	PROJECTION METHOD	PART NO.	WEIGHT: N/A
CLIENT NO:	ISO 2768-mk, ISO 13920-BF	REVISION: 1	PROJECT:	GA WITH NFFH50	SHEET: 1/1
DWG No: G-501743				DRY CARGO	
				GES-18 MKII	
				ASSEMBLY	